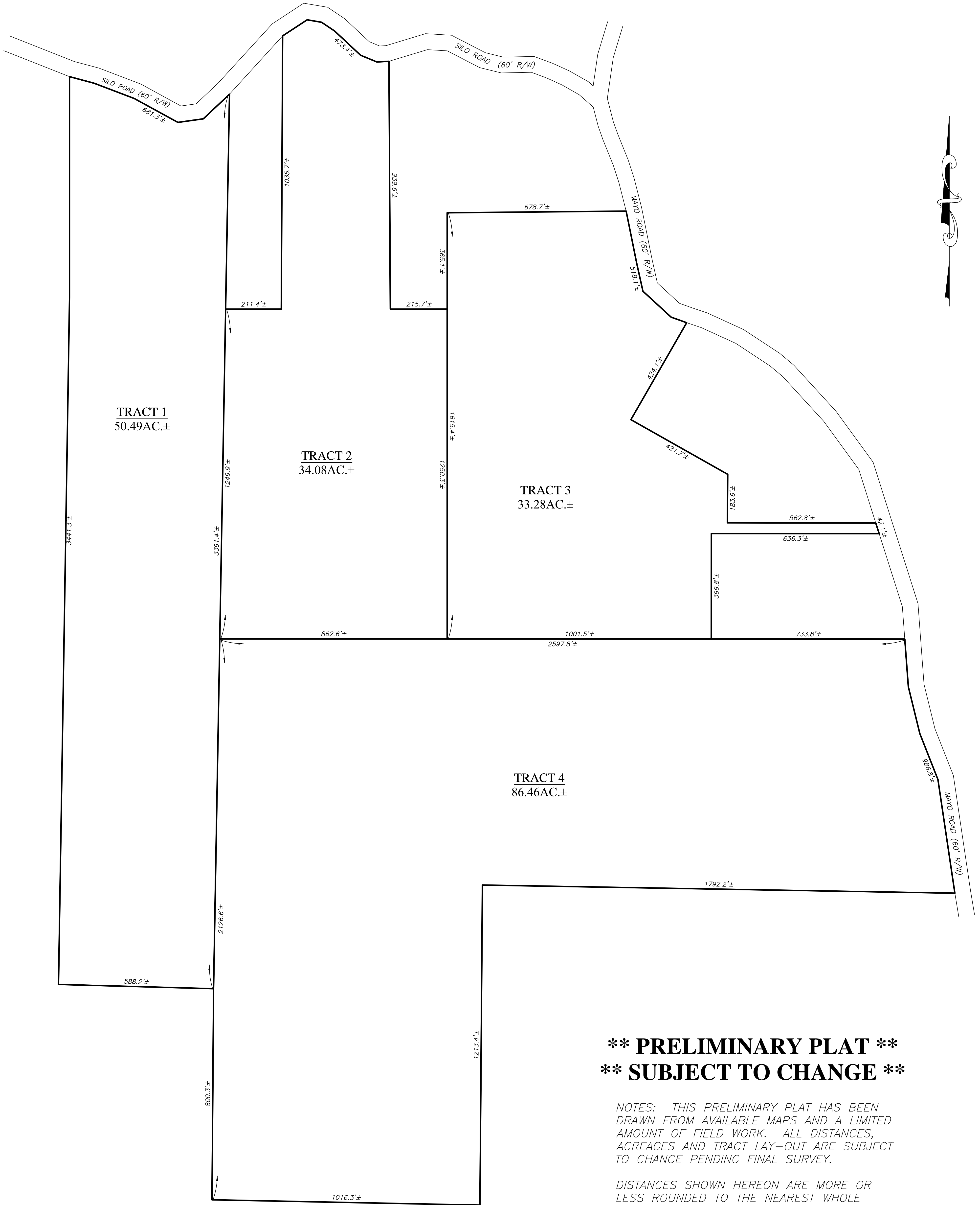


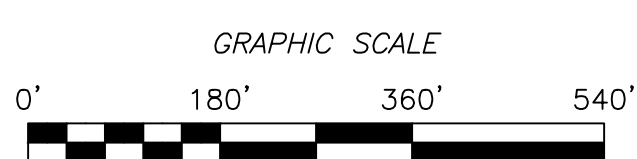
**\*\*\*\*PRELIMINARY PLAT\*\*\*\***  
**ETOWAH COUNTY PROPERTY**  
**ETOWAH COUNTY, ALABAMA**



**\*\* PRELIMINARY PLAT \*\***  
**\*\* SUBJECT TO CHANGE \*\***

*NOTES: THIS PRELIMINARY PLAT HAS BEEN DRAWN FROM AVAILABLE MAPS AND A LIMITED AMOUNT OF FIELD WORK. ALL DISTANCES, ACREAGES AND TRACT LAY-OUT ARE SUBJECT TO CHANGE PENDING FINAL SURVEY.*

*DISTANCES SHOWN HEREON ARE MORE OR LESS ROUNDED TO THE NEAREST WHOLE NUMBER.*



****PRELIMINARY PLAT****	
BAKER LAND SURVEYING, LLC 225 COUNTY ROAD 475 CENTRE, AL 35960 PHONE: (256) 927-2795 FAX: (256) 927-4759 WEBSITE: BAKERLANDSURVEYING.COM EMAIL: BAKERLS@TDS.NET	
FILE #: 22077	SCALE: 1" = 180'
DATE: OCTOBER 7, 2022	REVISION #: