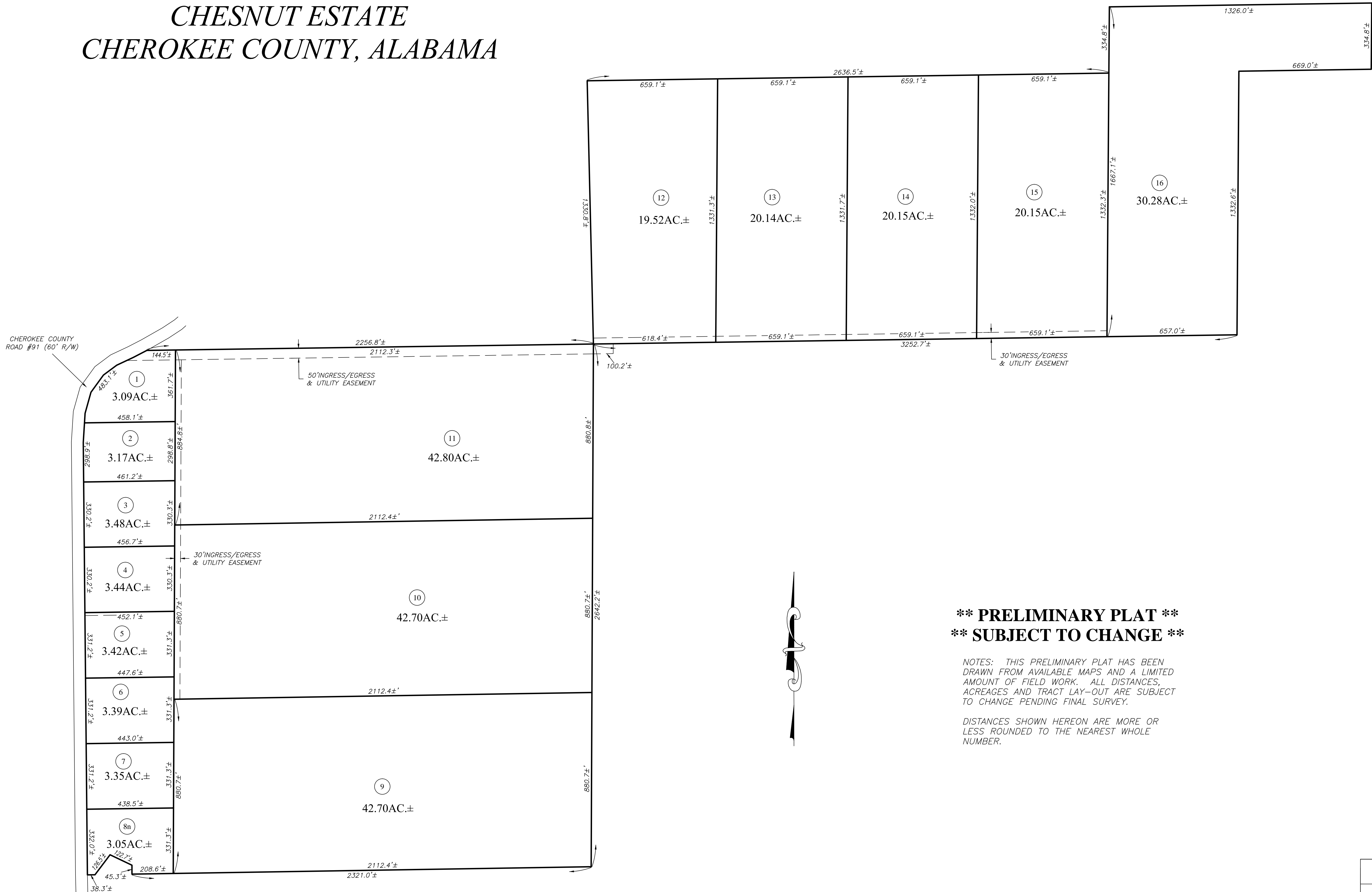


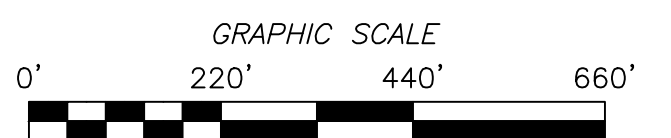
*****PRELIMINARY PLAT*****
CHESNUT ESTATE
CHEROKEE COUNTY, ALABAMA



**** PRELIMINARY PLAT ****
**** SUBJECT TO CHANGE ****

NOTES: THIS PRELIMINARY PLAT HAS BEEN DRAWN FROM AVAILABLE MAPS AND A LIMITED AMOUNT OF FIELD WORK. ALL DISTANCES, ACREAGES AND TRACT LAY-OUT ARE SUBJECT TO CHANGE PENDING FINAL SURVEY.

DISTANCES SHOWN HEREON ARE MORE OR LESS ROUNDED TO THE NEAREST WHOLE NUMBER.



| | |
|---|------------------|
| ***PRELIMINARY PLAT*** CHESNUT ESTATE | |
| BAKER LAND SURVEYING, LLC 225 COUNTY ROAD 475 CENTRE, AL 35960 PHONE: (256) 927-2795 FAX: (256) 927-4759 WEBSITE: BAKERLANDSURVEYING.COM EMAIL: BAKERLS@TDS.NET | |
| FILE #: 2021/CHESNUT PROP-1 | SCALE: 1" = 220' |
| DATE: AUGUST 2, 2021 | REVISION #: |